



House - Semi-Detached

**2S LANSDOWN HOUSE
HOGGRILLS END LANE,
NETHER WHITACRE,
COLSEHILL,
BIRMINGHAM, B46 2DD**

Per Month

£2,000 Per

FEATURES

- Superb Newly Built Semi Detached
- Three Double Bedrooms
- Contemporary Open Plan Living
- Guests Cloaks
- Highly Desirable Rural Location
- Master With En-suite Shower Room
- EV Charging Point
- Extensive Manicured Communal Gardens



**HOWKINS &
HARRISON**

3 Bedroom House - Semi-Detached located in Colsehill

This superb newly built house occupies a truly peaceful spot in the highly desirable village of Nether Whitacre, within the prestigious grounds of Lansdown House. Light and airy throughout, the property boasts spacious contemporary open plan living complete with kitchen including appliances and guests cloaks to the ground floor. Upstairs the property features three double bedrooms, the master with en-suite bathroom and a striking family bathroom, whilst externally the property benefits from ample off road parking, an EV charging point and use of the manicured sprawling gardens. Council Tax E. EPC C. Deposit £2307. Holding Deposit £461. Minimum annual household income £60,000. Available within two weeks of application. Fully managed by Howkins & Harrison

Call us on

01827 718021

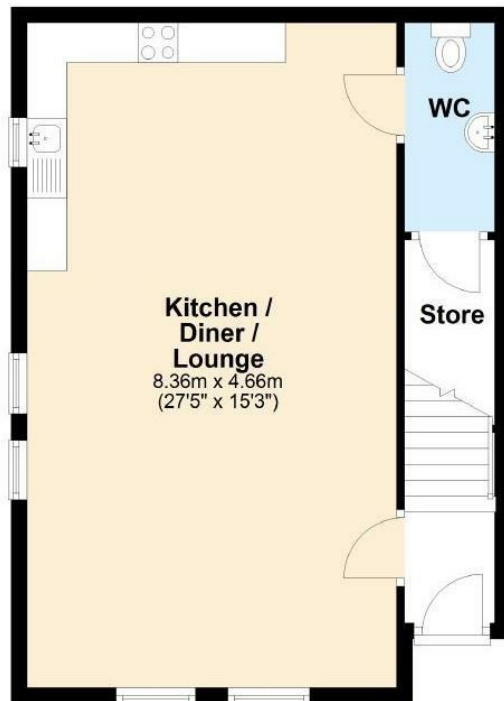
athletts@howkinsandharrison.co.uk

<https://howkinsandharrison.co.uk/>

Council Tax Band

E

Ground Floor



First Floor



Energy Efficiency Rating		Current	Potential
<i>Very energy efficient - lower running costs</i>			
(92 plus) A			
(81-91) B			
(69-80) C			
(55-68) D			
(39-54) E			
(21-38) F			
(1-20) G			
<i>Not energy efficient - higher running costs</i>			
England & Wales		EU Directive 2002/91/EC	

Agents Note: Whilst every care has been taken to prepare these particulars, they are for guidance purposes only. All measurements are approximate and are for general guidance purposes only and whilst every care has been taken to ensure their accuracy, they should not be relied upon and potential buyers are advised to recheck the measurements.

**HOWKINS &
HARRISON**